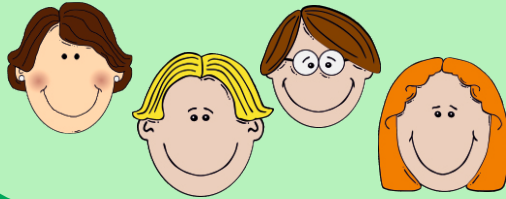
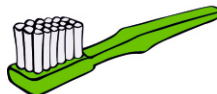


PRIVATE AND COMMON ITEMS

PUBLIC

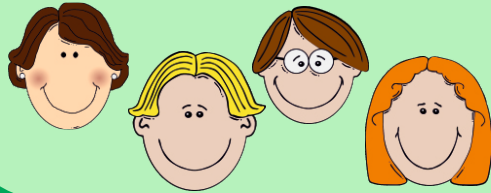


PRIVATE



PRIVATE AND COMMON PLACES

PUBLIC



PRIVATE



BUS STOP



TOILET



CAFE



CHANGING ROOM



BED



BATHROOM



PARK



CLASSROOM



GROUPS OF PEOPLE

FAMILY



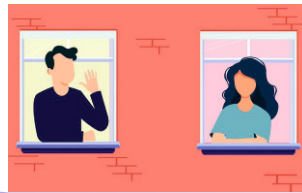
ACQUAINTANCES



GRANDPA



NEIGHBORS



MOM



CLASSMATES/
GROUPMATES



SISTER



BROTHER



DAD



PARENTS' WORK
COLLEAGUES



GRANDMA



GROUPS OF PEOPLE

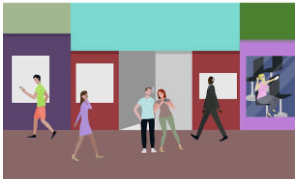
HELPERS



STRANGERS



PEOPLE ON THE STREET



POLICEMAN



DOCTOR



BUS DRIVER



SALESWOMAN



TEACHER



FIREFIGHTER



A PERSON WHO INVITES YOU TO GET INTO THE CAR



WAITER



DENTIST

